



Friends of the Oregon Caves and Chateau - November 2009

Volume 1, Issue 1



2009 was a wonderful season.....

Inside this issue:

Chateau Restoration	2
The Friends	2
Greetings from Vicki	2
Model Room	3
Monterey Furniture	3
Become a FOUNDER	4
Goals of the Friends	4

Oregon's Governor Ted Kulongoski and the First Lady (and Oregon Trust Advisor) Mary Oberst, Representatives from the Congressional Delegation, the State Legislature, County Board of Commissioners, National Park Services (NPS) and the Friends celebrated the opening of the Model Room and the kickoff of the Restoration on July 11 and 12, 2009. This weekend also commemorated the 75th Anniversary of the Chateau and the 100th Anniversary of the Monument. The Governor and First Lady cut the ribbon to formally open the tours of the Model Room and then graciously served Oregon 150 ice cream donated by the Umpqua Dairy in Roseburg.

Greetings received for the Commemoration:

"When President Taft created the National Monument in July of 1909, the United States was headed into difficult economic times. Then, the designation and protection of this area was instrumental in providing economic assistance to Southern Oregon. Now, all these many years later in the midst of another tough economic time, the Oregon Caves National Monument remains an important key to the economic health of the area. "

US Senators Ron Wyden and Jeff Merkley

"Kudos to the National Park Service, the Friends of the Oregon Caves and Chateau, the IVCDO, and the many partners who have worked to preserve the natural beauty of the Caves and the rustic beauty of the Chateau. This unique attraction offers visitors adventure, wonder and hospitality. From the impressive natural passageways of the Caves to the creative design of the chateau, this site amazes us, inspires us and makes us proud. "

Congressman Peter DeFazio

"The Chateau at the Oregon Caves National Monument is an integral part of the unique experience of visiting the 100 year old monument. The Chateau is a priceless treasure in the rich heritage of Oregon. A home to memories of a long and distinguished past, a place of solace and beauty today, and a continuing promise of special days in the future, it is a legacy that must be preserved. The Chateau is so much more than a building: it is a valued link between generations past, present, and future. "

Congressman Greg Walden



- **Stay in the Model Room** – page 3 & 4
- **Be a FOUNDER** - see page 4.
- **Help us reach our goals** - see page 4.



Oregon's First Lady Mary Oberst, Governor Ted Kulongoski and ORCA Superintendent Vicki Snitzler getting ready to cut the ribbon.

Chateau Restoration Plans

For over 100 years, visitors from all over the United States and foreign countries have enjoyed the remarkable Oregon Caves National Monument www.nps.gov/orca. Nestled high in the splendor of the botanically rich Siskiyou Mountains, generations of families have returned to enjoy cave tours, hiking and learning about the region's rare marble cave geology. The Oregon Caves Chateau, a National Historic Landmark and the primary historic structure in the Monument, is on the National Register of Historic Places, and has been welcoming guests for 75 years.



Postcard photo of the lobby in 1950.

The Friends of the Oregon Caves and Chateau

The Friends of the Oregon Caves and Chateau is a non-profit organization cooperating with the National Park Service (NPS) in the preservation, stewardship and improvement of the cultural and natural resources of the Oregon Caves National Monument. The Friends will benefit the Monument through the concern, care and philanthropy of dedicated individuals. They will help raise project donations and capital funds to restore and improve the facilities, and to involve the community and visitors in the future plans of the monument.

The Friends have already received gracious support from many foundations, business and private donors. Some of these include, The **Avista Foundation**, **Architecture Foundation of Oregon**, The **Carpenter Foundation**, The **Cynthia Woods Mitchell Fund of the National Historic Trust**, The **Four Way Community Foundation**, The **Kinsman Foundation**, **Meyer Memorial Trust**, The **Oregon Community Foundation**, The **Oregon Cultural Trust**, **R.E.C. Foundation - Fund of The Oregon Community Foundation**, **Pat Fahey - Southern Oregon Sanitation**, **Chapman and Kathy McGrew**, and donations in **Memory of Connie Baker Palmer**.

The Board of Directors, the Leadership Board, and the staff of the Oregon Caves National Monument have a perfect mix of experience in community development economic development, historic preservation, fundraising and political knowledge to enhance the partnership with the Oregon Caves National Monument to re-engage past visitors, citizens, donors and bring new visitors to assure that the Monument remains a special place for the next 100 years.

In addition to being a part of our common heritage, the Oregon Caves National Monument constitutes an important economic asset for the communities of the Illinois Valley, the Oregon Coast, Grants Pass and the state of Oregon. Tourism and recreation dollars contribute to many sectors of the region, including employment at the Caves and Chateau and increased traffic at local businesses.

This Chateau, (www.oregoncaveschateau.com) built during the Depression, still retains the local timbers and cedar bark harvested from logs on the Oregon Coast. Its unique collection of historic Monterey Furniture complements the interior. The Chateau's original light fixtures and many other historic details bring joy to visitors. However, many of the Chateau's original features urgently require attention. Lack of insulation in the Guest rooms, creaky plumbing, badly aged electrical and heating systems and worn interiors all require upgrading to allow the Chateau to realize its historic contribution to both culture and the local economy.

The Friends of the Oregon Caves and Chateau, (www.FriendsOCAC.org) have begun to raise the funds needed to completely restore the historic Chateau's interior and furnishings. Donations by friends and supporters demonstrating local, statewide and national support is essential to gain the attention of the NPS budget process in order for the Chateau's full structural restoration to be realized



**Greetings from:
Oregon Caves National Monument
Superintendent
Vicki Snitzler**

Not only is 2009 the Centennial of the Monument, but it is also the opportunity for the Monument to expand thanks to legislation introduced in Congress by Senator Wyden and Congressman DeFazio. Their proposal would add close to 4000 acres of adjacent Forest Service land to the Monument as National Preserve, which would fulfill the planning recommendation of the Monument's Management Plan completed close to 10 years ago.

This expansion would encompass the watershed that provides both the drinking water supply for visitors and is the source of the water that created and flows through the cave. Part of this protection will come from the retirement of the grazing lease in the watershed. In addition to protecting the watershed, the additional acreage would provide increased recreational opportunities to Bigelow Lakes, an important botanical area, and to Mount Elijah. It would mean the chance to greatly expand visitor programs such as guided ranger hikes and campfire talks. It would also result in the ability for the Monument to offer camping within its boundaries.

It has been the Monument's role, even before its official designation to serve as Oregon.

MODEL ROOM Phase Two - available for GUESTS will open May 2010



Phase One - MODEL ROOM - completed July 2009

Phase One - With a grant from the Cynthia Woods Mitchell Fund of the National Trust for Historic Preservation, the Friends hired George Kramer, an Ashland historic restoration consultant, to help create a practical - yet historically appropriate - materials strategy for a "Model Room." George, worked with the Friends, NPS and the Oregon State Historic Preservation Office to develop a viable alternative to the original "Nuwood" a fiberboard panel product, which is considered defining but had many functional limitations, that had been installed for both wall and ceiling surfaces in 1934. Originally a natural tan in color, multiple coats of a fire retardant turned the surface to an unattractive dark orange-brown. The panels, which are no longer manufactured, were applied without any insulation for either energy or noise, and determining how to correct these issues, while maintaining the historic character, has been a major concern in the preservation planning process. To explore options for Nuwood replacement, the most altered room in the Chateau was selected as a laboratory. Removing the panels in the former general manager's suite, whose walls and trim had earlier been painted white,

revealed a sound and strong structure. After insulating the walls and installing additional electrical circuits, the Nuwood was replaced with two layers of drywall, one for fire rating and the other, with duplicated chamfered edges, to re-create the look of the original surfaces. To duplicate the mottled surface, various textures were tested before selecting a finish which used a three-part-process - a coat of latex base, yellow/ocre tint glaze to create depth and a wipe on/dry brush-off application of a dark stain. This combination produced precisely the same color and texture as the original. A clear fir floor, the restoration of the original trim and historic lighting completed Phase One. The Friends thank Pendleton Woolen Mills, Gordon Longhurst Construction, Carol Edelman, Jerralynn Ness, School House Electric, the IVCDO, NPS, SHPO, and Miller Paint for their wonderful contributions to the Model Room.

Phase Two - The adjoining sleeping room and bathroom will be completed and available for **GUESTS** in May of 2010. See page 4 and become a Founder to be entered to win a chance to stay in the Model Room in the 2010 Season.

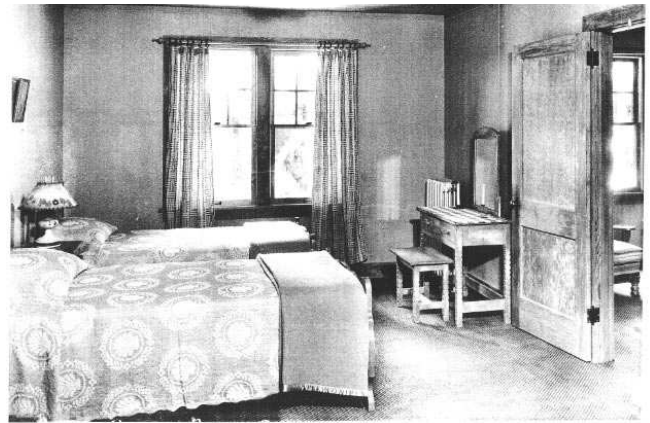


Photo of Guest Room taken in 1934 - Most of the rooms still retain many of the original features.

Monterey Furniture Collection

Following research supported by the Meyer Memorial Trust, we have learned that the Chateau holds the largest collection of historic Monterey Furniture in the Northwest. This furniture was produced between 1929 and 1943 by the Mason Manufacturing Company for Los



Angeles' Barker Brothers. The Chateau's collection was purchased in 1934 from Portland's Meier and Frank for the Chateau's opening. The Friends were fortunate to secure the services of Jerralynn Ness, a Monterey Furniture specialist who assisted in evaluating this unique collection. Additionally, an inventory and initial assessment of the furniture was conducted in the summer of 2005, by Al Levitan from the NPS Harper's Ferry Center. The first Monterey pieces to be restored will be placed in the Model Room at the opening of the 2010 Season.

To protect this asset, hundreds of pieces of the Chateau's Monterey Furniture collection need to be preserved, protected and, in some cases extensively restored. In 2009, the Friends received a grant from the Oregon Cultural Trust to support the costs of restoring the first and most critical pieces of Monterey Furniture. We have since begun receiving and evaluating additional offers of donated pieces, and are working with Jerralynn to develop a plan to restore the collection, replace the missing pieces and showcase the furniture in a living museum to demonstrate the many different styles that would have been original to the Chateau.



Tour the remarkable Marble Caves protected and preserved for over 100 years.

Friends of the Oregon Caves and Chateau

Board Members

James R. Dole, Chairman

Ron Fox, Vice Chair

Kris Woodburn, Sec/Treas

Menno Kraai

Kenny Houck

Dave Toler

Paulie Brading

Charles Davis

Emeritus Members:

Steve Swearingen,

Dean Wendle

Vicki Snitzler

Superintendent

Oregon Caves National

Monument

Sue Densmore

Executive Director

P.O. Box 2195

Grants Pass, OR 97528

541-944-1139

sue@FriendsOCAC.org

www.FriendsOCAC.org

BECOME A FOUNDER - Join 50 others.....

The first 50 people to contribute \$1000 or more will be select members the FOUNDERS of the Friends of the Oregon Caves and Chateau. This once in a lifetime opportunity will allow you to attend special events in the 2010 season and to be invited to the special season closing event in 2010. You will be honored on a plaque in the Chateau and in publications. You will also be entered in the drawing to stay in the Model Room in 2010.

MODEL ROOM SUPPORTER - Phase Two - Guest room and Bathroom

Phase Two of the MODEL ROOM is the adjoining room that will be available to Guests. Our goal is to restore this room by May 2010 for the Opening of the 2010 Season. It is being dedicated to Harry Christensen - long time General Manager. Donors will be acknowledged in the room and in publications. With a donation of \$1000 or more donors will also be considered Founders.

RESTORE a ROOM or a set of MONTEREY FURNITURE

Contributions of \$5000 - \$10,000 will restore a set of Monterey Furniture and a contribution of \$25,000 will support the full restoration of a one of the 23 guest rooms. Recognition will be placed in the room, and in the Chateau with this contribution. Contributors will also be considered Founders. Join with your family, or business to honor a friend or relative by this wonderful opportunity.



Specific Goals of the Friends:

- Restore **PHASE TWO**, the Guest Room of the model room - in honor of former General Manager Harry Christensen before the 2010 season - \$100,000
- Restore the 23 guest rooms and their Historic Monterey Furniture - \$25,000 for each room - \$550,000
- Restore the lobby, restaurants and common public places - \$200,000
- Outreach and Special Events to help promote the Friends' restoration goals - cultural, historical and family fun - \$45,000

The Friends depend on your tax-deductible donations to help support the Monument and to restore the grandeur of one the nation's oldest Great Lodges, the Oregon Caves Chateau. While the Chateau is one of only three publicly-owned historic lodges in Oregon that provides overnight accommodations, both Timberline Lodge and Crater Lake Lodge have already been restored.

Now it's time for the Oregon Caves Chateau!